

EAT
MEET



EVENT PLANNERS GUIDE



At the university's founding in 1880, Los Angeles was a frontier town with no paved streets, no electric lights, and no telephones. Just four years later, the University of Southern California graduated its first class of three students. Today, this nonprofit, private research university serves as a global center of education for promising young trailblazers in all sectors and societies of the world. Now spanning over 150 square acres in the heart of Los Angeles and minutes away from many of the city's top attractions, USC offers an unrivaled destination for culture, academia, and entertainment.

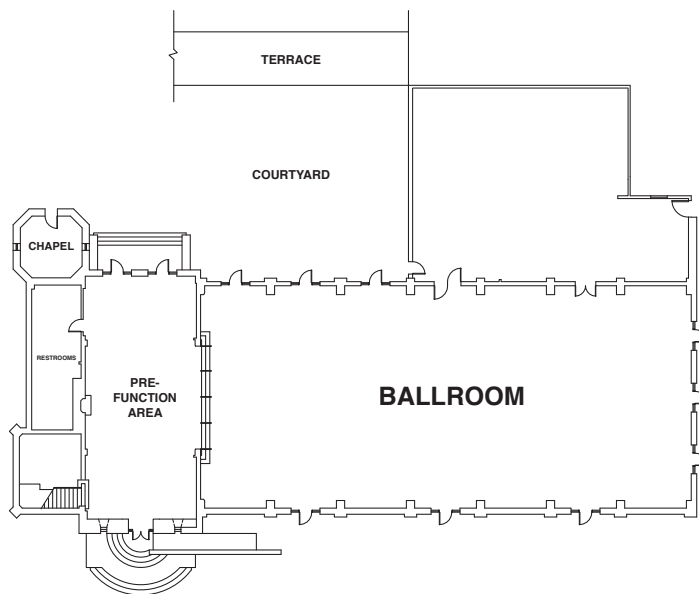
Striving to create the best USC experience for our Trojan family and visitors alike, USC Auxiliary Services provides quality products and services that anchor our Los Angeles campuses. As one of USC's largest divisions, USC Hospitality offers access to a mix of over 40 venues including the USC Hotel and Los Angeles Memorial Coliseum. From parking arrangements, full-service catering, to well-appointed guest rooms, our expert sales and catering teams offer one-stop shopping for all of your event-planning needs. Whether you are in Los Angeles for a sporting or academic event, exhibit or incentive program, we look forward to hosting you!

Eat, Meet, Stay & Fight On!

TOWN AND GOWN

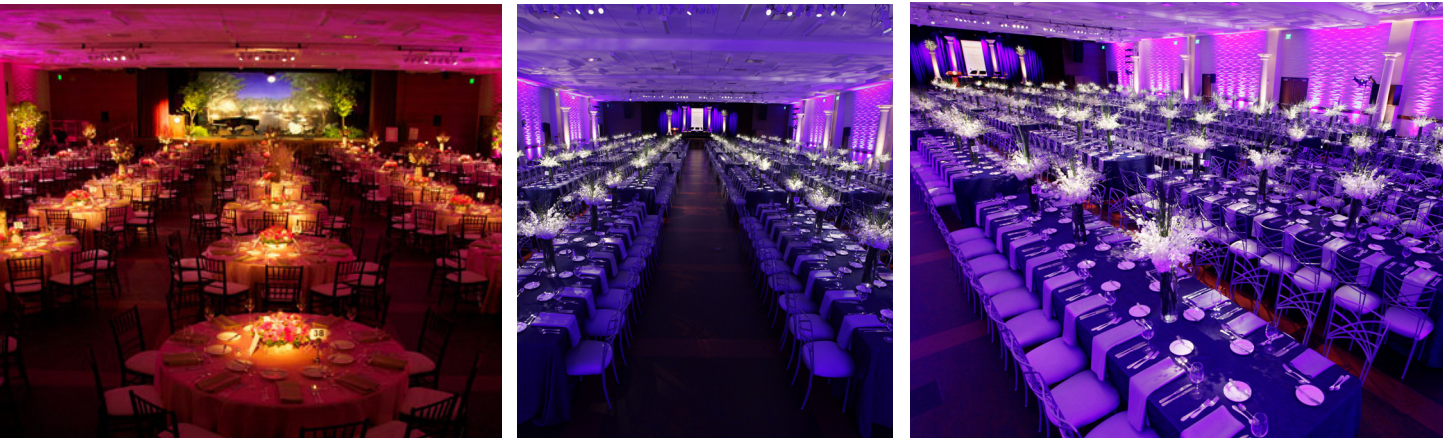


The premier ballroom on the USC Campus is appointed with 8,000 square feet of pillar free space for special events, meetings and conferences. Eight magnificent Schonbek chandeliers illuminate Town & Gown, with custom decorative paint finishes throughout.



ROOM	DIMENSIONS	SQ FT.	THEATER	ROUNDS	RECEPTION
BALLROOM	119 x 54'	6,426	550	420	600
FOYER	54' x 24'	1,296	-	100	150
PATIO	-	3,360	120	70	150

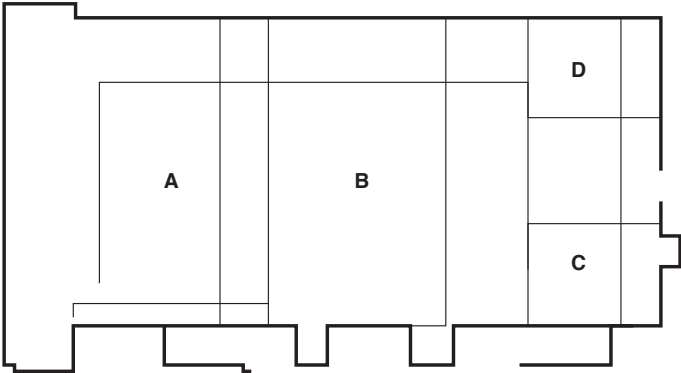
RONALD TUTOR CAMPUS CENTER



The Ronald Tutor Campus Center features the largest ballroom on campus, multiple meeting and event spaces, and a multi-outlet food court. This campus venue is the hub for life at USC.

TROJAN GRAND BALLROOM

The Trojan Grand Ballroom is the largest multipurpose room on campus. Used as one large space or as four smaller rooms, the ballroom can accommodate social events, lectures, conferences, tradeshow, and many other event types. Amenities include theatrical stage lighting, a fully integrated production system, and backstage green room with close proximity to two other flexible conference spaces in the building, ideal for breakout space.



AMENITIES:

Available furniture: 60" banquet rounds, 1,000 ballroom chairs, 4 - 6' check in tables, and 1 Podium. Stage and audiovisual equipment are in Ballroom A, which includes: Installed Panasonic PTD video projector, installed motorized projection screen (29'3" diagonal), theatrical stage lighting, and installed production system with microphones.

ROOM	DIMENSIONS	SQ. FT.	THEATRE	BANQUET ROUNDS	FAIR	HEIGHT
ABCD	129'x69'	8,901	800	660	900	15'
AB	97'x69'	6,693	720	500	440	15'
BCD	89'x69'	6,141	620	550	400	15'
CD	30'x69'	2,070	160	100	110	15'
A	38'x69'	2,622	220	120	17	15'
B	59'x69'	4,701	400	350	280	15'
C	30'x35'	1,050	80	60	60	15'
D	30'x34'	1,020	80	60	60	15'
STAGE	20'x25'	500	20	N/A	N/A	12'

RONALD TUTOR CAMPUS CENTER



FRANKLIN SUITE & FORUM

Enjoy a birds-eye view of Trojan life below from these meeting rooms on the upper levels of the Ronald Tutor Campus Center. The Franklin Suite can divide into three total breakout spaces, while the Forum features high, vaulted ceilings and tiered floors. Both meeting spaces offer natural lighting and fully integrated audio visual capability.

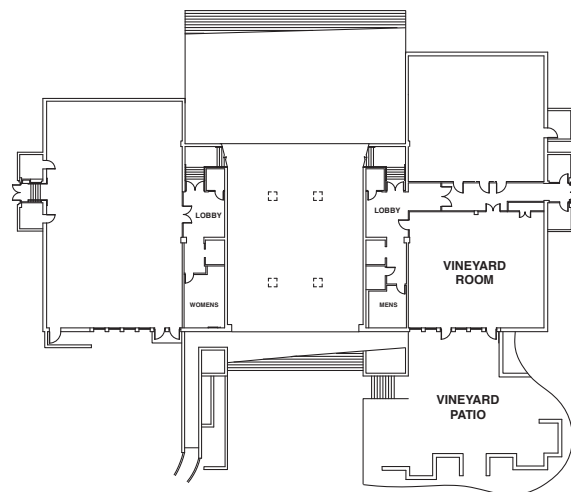
ROOM	DIMENSIONS	SQ FT.	THEATRE	CLASSROOM	CLASSROOM W/ AV	CONFERENCE	ROUNDS	U-SHAPE W/ AV
350	31'x17'	527	42	30	26	24	30	20
351	31'x19'	589	42	30	26	24	30	20
352	31'x17'	527	42	30	26	24	30	20
350/351	31'x36'	1,116	84	60	60	34	70	36
351/352	31'x36'	1,116	84	60	60	34	70	36
350/351/352	31'x53'	1,643	126	90	82	48	100	42
450	40'x53'	2,120	158	50	-	32	100	-

VINEYARD ROOM



DETAILS:

The Vineyard Room, located on the lower lobby level of the USC International Academy, can accommodate up to 100 guests for a sit-down meal. The adjacent outdoor patio is perfect for pre-function receptions and networking.



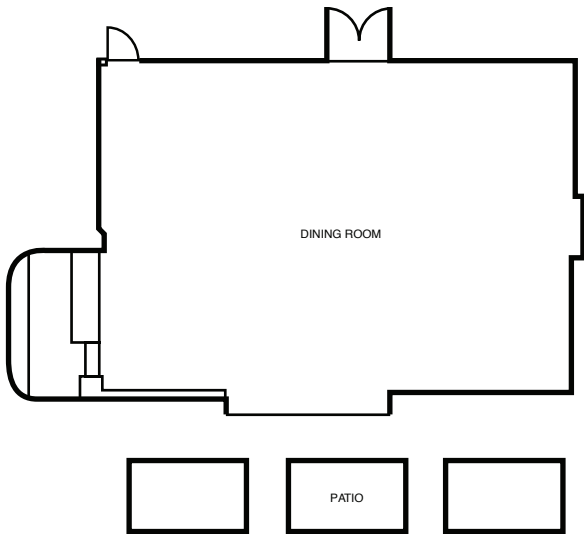
ROOM	DIMENSIONS	SQ. FT.	CLASSROOM	THEATER	CONFERENCE	SQUARE	U-SHAPE	ROUNDS	RECEPTION
VINEYARD	48'x40'	1,920	70	130	34	36	32	130	150
PATIO	-	-	-	-	-	-	-	70	90

BASHOR LOUNGE



DETAILS:

Located in the home to USC’s Department of Intercollegiate Athletics, Bashor Lounge will impress any sports fanatic with a display highlighting our Trojan athletic heritage, including an impressive exhibit of Olympic medals and multiple Heisman trophies. Bashor Lounge features a unique foyer, built-in bar, integrated audiovisual capability, and outdoor event space.



SQ FT.	THEATER	ROUNDS	RECEPTION
1,312	90	80	100

USC HOTEL



Its prime location adjacent to the University of Southern California in the revitalized Figueroa Corridor, and its proximity to downtown Los Angeles and the Los Angeles Convention Center, makes the USC Hotel an excellent choice for those who require convenient access to the USC campus and other neighborhood destinations.

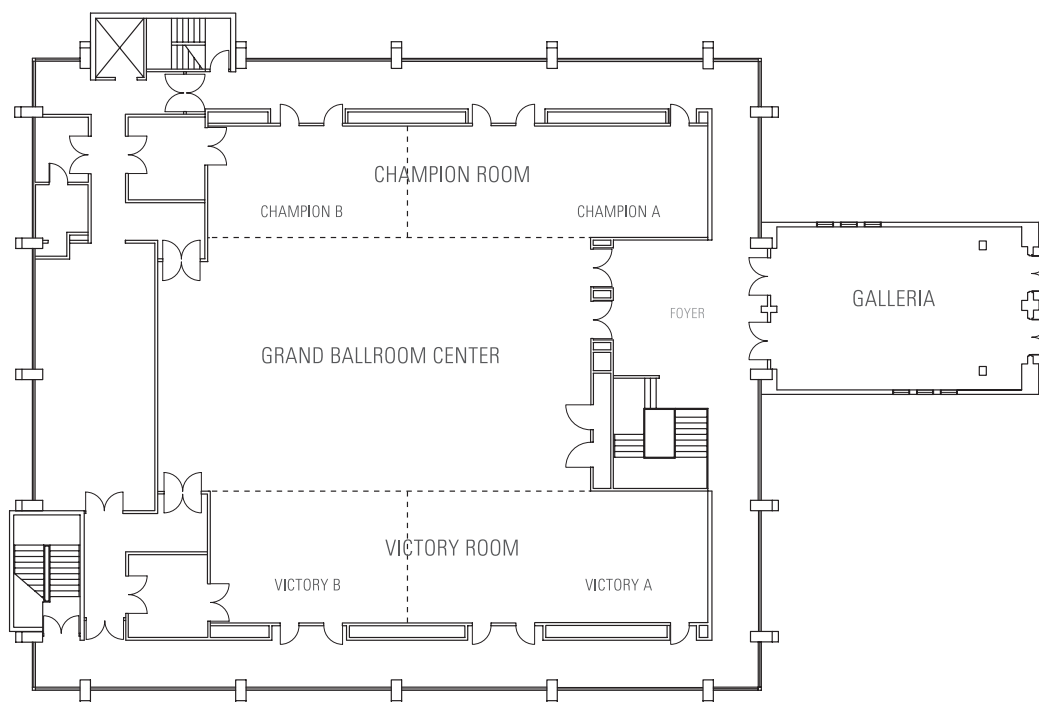
ROOM	DIMENSIONS	SQ. FT.	THEATRE	CLASSROOM	ROUNDS	ROUNDS W/ DANCE	STAND- ING	U-SHAPE	HOLLOW SQUARE	CONF.
GRAND BALLROOM	80x86x13	6800	700	400	450	400	700	90	130	N/A
CENTER BALLROOM	75x36x13	2700	300	180-200	180	120	350	65	80	100
VICTORY ROOM	80x25x11	200	200	120	120	80	150	65	70	68
VICTORY A (3 PARLORS)	48x25x11	1200	110	64	80	60	90	46	50	42
VICTORY B (2 PARLORS)	32x25x11	800	80	48	60	40	60	34	40	30
CHAMPION ROOM	80x25x11	2000	200	120	120	80	150	65	70	68
CHAMPION A (3 PARLORS)	48x25x11	1200	110	64	80	60	90	46	50	42
CHAMPION B (2 PARLORS)	32x25x11	800	80	48	60	40	60	34	40	30
BALLROOM & WING	80x61x13	4880	450	280	300	250	450	80	110	150
GALLERIA	38x25x10	1470	-	-	-	-	-	-	-	-
LOBBY GALLERY	32x23	736	-	-	120	-	150	-	-	-
200 ROOMS	22x18x10	400	35	35	30	-	30	16	18	16
POOL	73x58	4234	-	-	120	-	150	-	-	-
BREEZEWAY	69x31	2139	-	-	60	-	60	-	-	-
TROPHY ROOM	20x25	500	50	35	40	-	50	20	20	36
1880 ROOM	-	-	150	100	100	-	150	50	50	40

USC HOTEL



GRAND BALLROOM

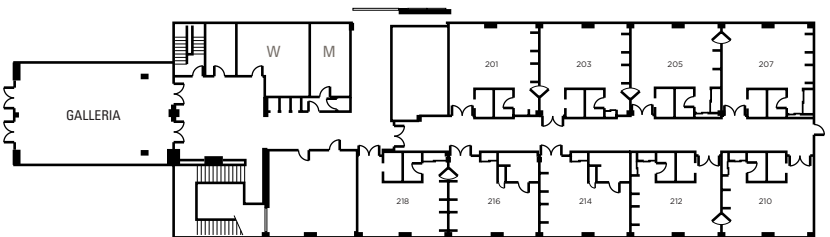
Renovated in 2015, our 6,880 square foot Grand Ballroom is the crown jewel of our event space. Located on the second floor of the hotel, we can accommodate up to 800 guests, and the venue can be partition into five total subunits. From day conferences to gala dinners, the Grand Ballroom can be tailored to your personal needs.



USC HOTEL

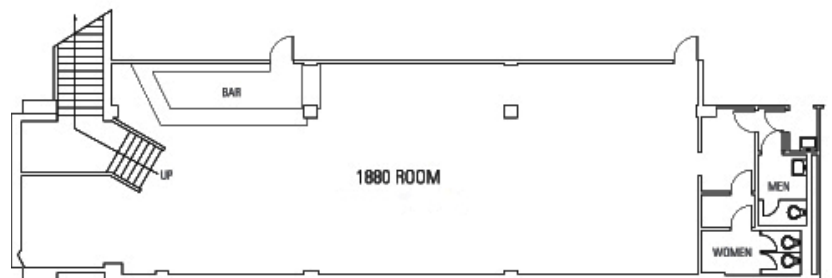
EXECUTIVE BOARDROOM & CONFERENCE ROOMS

The USC Hotel features one executive boardroom and seven multi-purpose conference rooms. These private rooms are ideal for interviews, classrooms, board meetings or breakout space, and include natural lighting, a wet bar, and private restroom.



THE 1880 FOUNDERS ROOM

Named in homage to the year our university was founded, The 1880 Founders Room is a mid-size event space for socials and events. This room features a dedicated exterior entrance, private restrooms, and a built-in bar.



USC HOTEL

USC TEACHING GARDEN

Host your cocktail party or reception in our Teaching Garden located on the hotel grounds, where produce is grown in its natural state without the use of harmful chemicals. We are the first university in the nation to have a farming effort of this scale using vertical tower garden aeroponic technology, making for a unique event setting and endless conversational opportunities for your guests!



USC HOTEL POOL

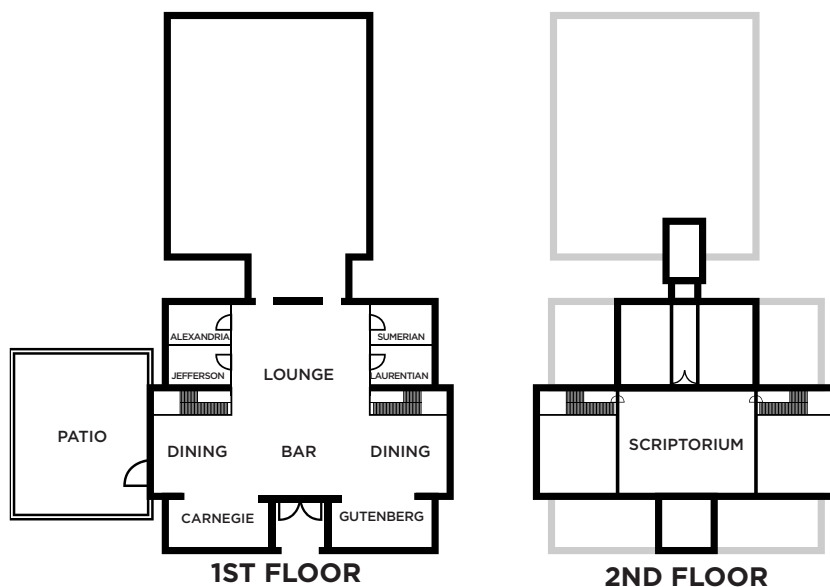
Think outside the box and outside the boardroom! Our hotel breezeway or pool deck can be transformed to accommodate a casual outdoor lunch or evening cocktail reception.



AMY KING DUNDON-BERCHTOLD UNIVERSITY CLUB OF USC



The University Club has a number of wonderful rooms to host your private events throughout our building. Please review our room capacity and set-up charts when making your requests to our Banquets and Catering team. They are able to assist you in every aspect of your event planning.



ROOM	Board	Conference	U-Shape	Rounds	Reception	Theater	Outdoor Furniture
CARNEGIE	-	20	20	20	20	20	-
GUTENBERG	-	20	20	20	20	20	-
ALEXANDRIA OR JEFFERSON	12	-	-	-	-	-	-
PRIVATE SOUTH*	18	18	16	30	30	20	-
SUMERIAN OR LAURENTIAN	12	-	-	-	-	-	-
PRIVATE NORTH*	18	18	16	30	30	20	-
SCRIPTORIUM	-	48	40	100	100	100	-
PATIO	-	-	-	-	120	-	75

*Alexandria and Jefferson Combined
 **Sumerian and Laurentian Combined

RESTAURANTS OF USC



THE LAB GASTROPUB



THE EDMONDSON FACULTY CENTER



MCKAY'S

LOCATION	SQ. FT.	EXISTING SETUP	CONFERENCE	BANQUET ROUNDS	RECEPTION
MORETON FIG					
MAIN DINING ROOM	1,850	86	-	-	-
PRIVATE DINING ROOM	200	12	12	-	-
PATIO	2,500	72	-	-	120
BAR	350	35	-	-	35
THE LAB GASTROPUB					
MAIN DINING ROOM	1,668	146	-	-	250
CLASSROOM/PRIVATE	334/356	18	18	-	50
PATIO	1,314	60	-	-	85
MCKAY'S					
MAIN DINING ROOM	1,200	90	-	-	-
TROPHY ROOM	800	54	40	-	40
LOUNGE	1,050	50	-	-	100
ROSSO ORO'S PIZZERIA					
MAIN DINING ROOM	1,464	80	-	-	120
TRADITIONS					
MAIN DINING ROOM	1,464	80	-	-	200
TOMMY'S PLACE	3,049	150	-	-	300
URBNMRKT					
MAIN DINING ROOM	1,800	150	-	-	250
THE EDMONDSON					
MAIN DINING ROOM	1,190	64	-	70	150
DEAN'S DINING ROOM	234	10	10		
CARDINAL & GOLD	522	24	22	30	50

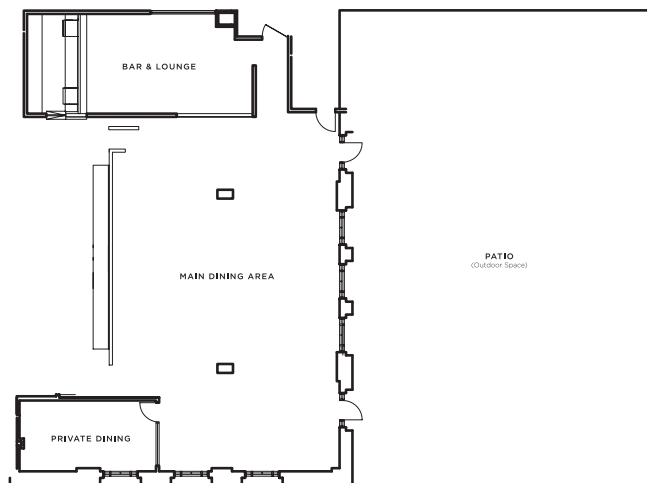
*Existing Set Up is the existing furniture and chairs in the venue. The number is the actual number of seats available for guests.

*Set ups that differ from the existing set up are subject to additional labor and equipment rental fees. Your professional sales contact can discuss all possible configurations based upon your event needs and expected attendance.

RESTAURANTS OF USC

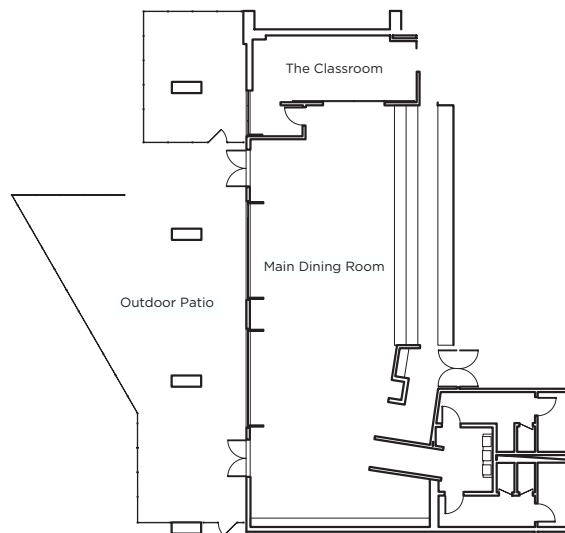
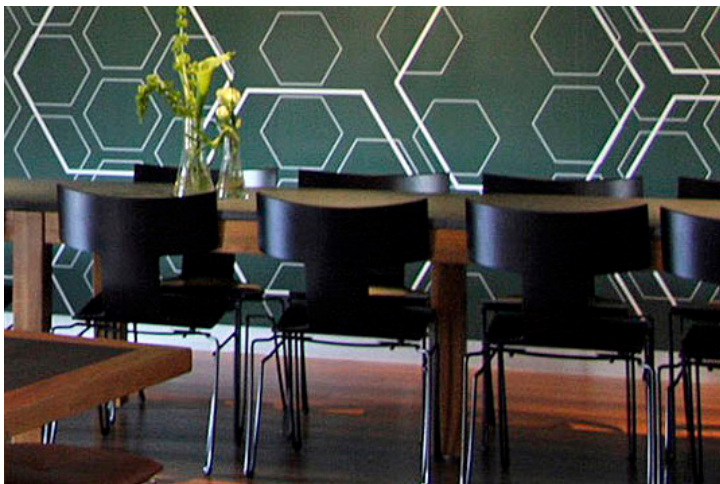
MORETON FIG

USC's flagship restaurant is conveniently located in the center of campus in the Ronald Tutor Campus Center. The stylish, vibrant restaurant features farm to table cuisine, an open kitchen, full bar, private dining room, and a beautiful outdoor patio anchored by USC's historic Moreton Bay Fig Trees. The patio is a favored location for private events for up to 120 guests. The Moreton Bay Fig Trees provide shade for afternoon gatherings, while its strung lights create an elegant ambiance for evening events. The private dining room is perfect for board meetings, intimate presentations, and small lunch and dinner programs for up to 12 guests.



THE LAB GASTROPUB

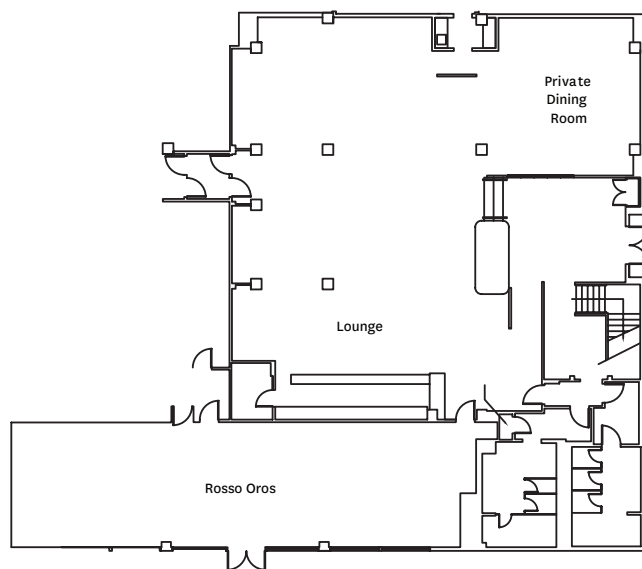
The science of fun and fine dining is artfully executed daily at The Lab Gastropub. This casual eatery is conveniently located between the USC Hotel and the Galen Center, across the street from campus and a short walk from the Los Angeles Memorial Coliseum. The menu features a variety of pub favorites and an extensive collection of beers. The classroom, the private dining room, is ideal for social events and the outdoor patio is a great place to enjoy the SC sunshine!



RESTAURANTS OF USC

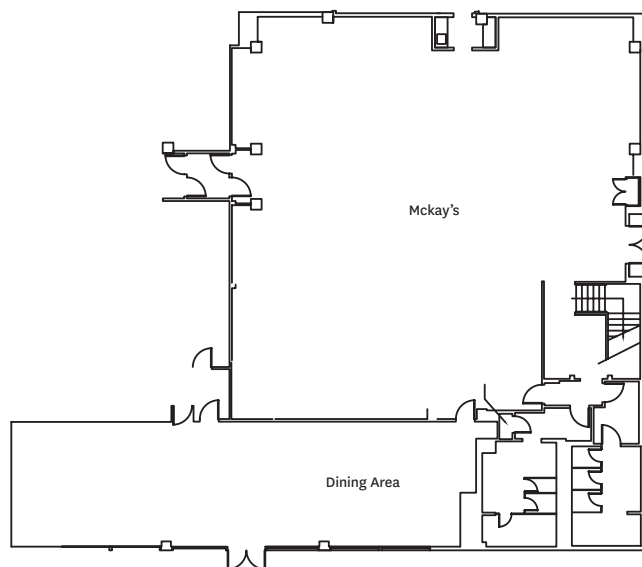
MCKAY'S

Named for one of USC's most beloved football coaches, McKay's is the on-property restaurant at the USC Hotel serving daily breakfast, lunch and dinner. The Trophy Room, McKay's private dining room, is an excellent choice for groups with up to 40 guests. The room can be configured using the existing tables and chairs in several settings, based on event needs. McKay's Lounge is also available for private events and can accommodate up to 100 guests.



ROSSO ORO'S

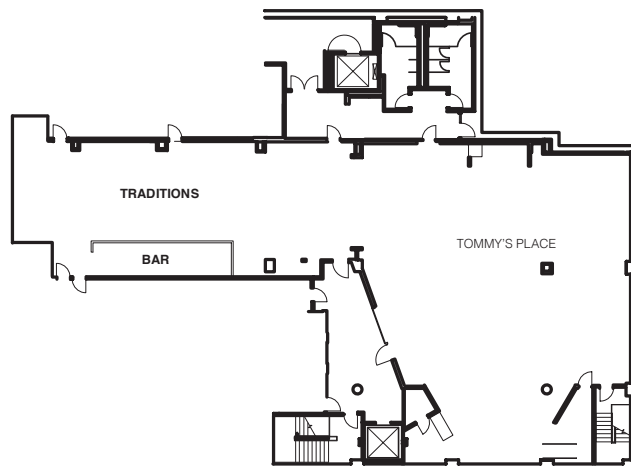
Also found at the USC Hotel, Rosso Oro's offers New York style thin crust pizza, sandwiches, and pastas in a spirited but casual, cardinal and gold setting. It's the perfect quick stop to watch a game on one of our large TV's or play a round of shuffleboard with friends!



RESTAURANTS OF USC

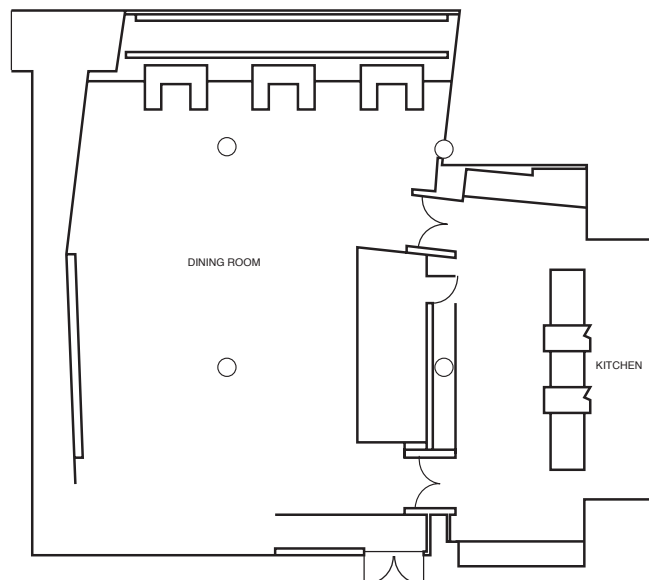
TRADITIONS

Traditions is the ideal venue for private parties, receptions, corporate groups and celebrations looking for a more laid back, less formal atmosphere. Nestled in the lower level of the Ronald Tutor Campus Center, Traditions offers much more than a typical campus sports bar and can serve as a spirited backdrop for your event.



URBNMRKT

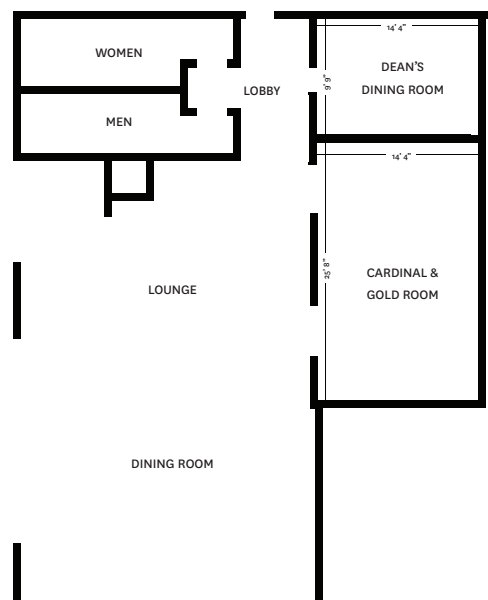
Formerly an industrial loading dock space, URBNMRKT combines sleek and modern finishes to create a unique urban experience. The versatile space can accommodate groups up to 250 guests and is available for evening events during the week and all day on weekends. The space is also popular for filming and photo shoots. Events at URBNMRKT are exclusively catered by USC Special Events and Catering.



RESTAURANTS OF USC

EDMONDSON FACULTY CENTER AT HEALTH SCIENCES CAMPUS

The Edmondson Faculty Center is based on a farm-to-fork concept created by USC Hospitality located at the Health Sciences Campus. The Edmondson is proud to welcome all faculty, staff, students, and visitors. A modern atmosphere provides guests with an open dining room, lounge area, and private dining rooms for meetings and special occasions.



MAP OF VENUES

